

| | |
|----------------|------|
| Application No | |
| Candidate Name | |
| Roll No. | |
| Test Date | |
| Test Time | |
| Subject | GPAT |

Section : Other Subjects

Q.1 In India the patent office has its head office at Kolkata and branch offices at :

- Options
1. Mumbai, Chennai and New Delhi
 2. Chandigarh, Hyderabad and Goa
 3. Kashmir, Ahmedabad and Trivandrum
 4. Dibrugarh, Indore and Vapi

Q.2 Which of the following is considered as differentiated product ?

- Options
1. Paracetamol
 2. Zantac
 3. Ranitidine
 4. Isoniazid

Click To Visit Best pharma
portal
pharmagang.com

Q.3 The relation between emissive power of the surface and its absorptivity is given by :

- Options
1. Kirchhoff's Law
 2. Stefan - Boltzmann Law
 3. Fourier's Law
 4. Darcy's Law

Q.4 Hardinge mill is a variant of :

- Options
1. Ball mill
 2. Hammer mill
 3. Fluid energy mill
 4. Rotary cutter mill

Q.5 As per the Medical Termination of Pregnancy Act and rules, the safe custody of "Forms" is with :

- Options
1. Registered Medical Practitioner
 2. Owner of the approved place
 3. Standing committee
 4. Chief Medical Officer

pharmagang.com

Q.6 In Direct, Contact or Jet condensers, barometric leg serves one of the following functions :

- Options
1. To measure the pressure difference across the tube
 2. To Heat the liquid feed to it's boiling point
 3. To remove the condensate/cooling water mixture
 4. To transfer the feed in to the evaporating chamber

Q.7 For protein detection most commonly used probe is :

- Options
1. Antigen
 2. Interferon
 3. Antibody
 4. Lectin

Q.8 Consumer who are loyal to two-three brands are considered as :

- Options
1. Semi-core loyals
 2. Switcher loyals
 3. Shifting loyals
 4. Split loyals

pharmagang.com

Q.9 Choose the CORRECT statement with respect to 'The Pharmacy Act, 1948':

- Options
1. Education regulation 1991 dose not prescribe the minimum qualification for the registration as Pharmacist
 2. State Govt. is authorised to make any rules with respect to course of study.
 3. Section 12 of the act deals with the approval of course of study and examination under chapter 2 thereof.
 4. Section 12 of the act deals with the approval of course of study under chapter 2 thereof.

Q.10 Penalty for the cultivation of any cannabis plant to produce, sell, purchase transport in contravention of Narcotic Drugs and Psychotropic substances Act and Rules on First conviction is :

- Options
1. Rigorous imprisonment up to 10 years or fine up to Rs. 1 Lakh
 2. Rigorous imprisonment up to 6 months
 3. Rigorous imprisonment up to 10 years or fine up to Rs. 10 Lakhs
 4. Fine up to Rs. 10 Lakh

Q.11 ELISA is based upon :

- Options
1. Antigen Antibody Interaction
 2. Lectin - Antibody Interaction
 3. Antibody protein Interaction
 4. Antigen Protein Interaction

pharmagang.com

Section : Pharmaceutical Chemistry

Q.1 Dehydration of this dicarboxylic acid to obtain corresponding anhydride is difficult due to stereochemical arrangement :

- Options
1. Glutaric acid
 2. Succinic acid
 3. Fumaric acid
 4. Malic acid

Q.2 Anti addition of bromine to trans-2-butene yields :

- Options
1. Only enantiomers
 2. Only meso compounds
 3. Only racemic mixture
 4. Enantiomer and racemic mixture

Q.3 The structural features present in anti-cancer antibiotics (Doxorubicin, Daunorubicin, Idarubicin and Epirubicin) are

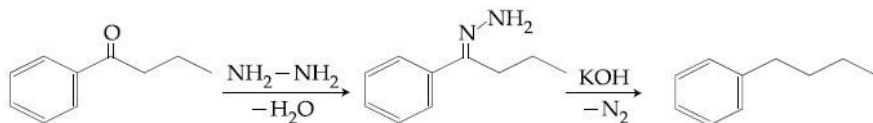
- Options
1. Anthracene nucleus fused to cyclohexane ring that is subsequently connected with amino sugar via glycosidic linkage
 2. Phenanthrene nucleus fused to cyclohexane ring that is subsequently connected with amino sugar via glycosidic linkage
 3. Quinoline nucleus connected with amino sugar via glycosidic linkage
 4. Naphthalene nucleus connected with amino sugar via glycosidic linkage

Q.4 Which of the following second generation β_1 - selective blockers contains 1,3,5, - thiadiazole ring in its structure ?

- Options
1. Timolol
 2. Penbutolol
 3. Sotalol

Click To Visit Best pharma portal
pharmagang.com

Q.5



Identify the named reaction;

Toppers Pharma Tech

Options

1. Clemmensen reduction
2. Wolf-Kishner reduction
3. Wolf-Rearrangement
4. Curtius Rearrangement

Q.6 Amylopectin, a component of starch gives _____ colour with iodine

Options

1. Green
2. Red-purple
3. No colour
4. Blue

Q.7 Calculate the accurate osmotic pressure at 0°C of a blood serum sample using Lewis equation having freezing point -0.53°C :

Options

1. 0.636 atm

2. 0.0441 atm
3. 574.28 atm
4. 6.39 atm

Q.8 Oxazole is prepared by the condensation of α -amino carbonyl compound with :

- Options
1. Isocyanide
 2. Amino acid
 3. Iminoester
 4. Aminoether

Q.9 Von Gierke's glycogen storage disease is due to defect of which enzyme :

- Options
1. Glucosyl 4 - 6 transferase
 2. Phosphofructokinase
 3. Glucose - 6 - phosphatase
 4. Glycogen phosphorylase

Q.10 This semisynthetic derivative of penicillin is synthesized by acylation of 6-APA with *p*-hydroxy phenyl glycine :

- Options
1. Ampicillin
 2. Carbenicillin
 3. Amoxicillin

Q.11 The basic ring system present in the antihypertensive and antiglaucoma drug "Timolol" is :

- Options
1. 1, 2, 5 - Thiadiazole and Morpholine
 2. 1, 3 - Thiazole and Morpholine
 3. 1, 2, 4 - Thiadiazole and Morpholine
 4. 1, 3, 5 - Thiadiazole and Morpholine

Q.12 Conversion of a carbonyl functionality directly to its hydrocarbon in basic media can be achieved by :

- Options
1. Sodium borohydride reduction
 2. Lithium aluminium hydride reduction
 3. Wolf Kishner reduction
 4. Clemmensen reduction

Q.13 The following combination of drugs are used in treating severe travellers diarrhoea :

- Options
1. Pyrimethamine and sulfadiazine
 2. Trimethoprim and sulfadiazine
 3. Pyrimethamine and sulfamethoxazole

Q.14 Conversion of aryl diazonium chloride to aryl chloride can be achieved in the presence of :

- Options
1. Sodium chloride
 2. Copper (II) chloride
 3. Calcium chloride
 4. Copper (I) chloride

Q.15 The chief product obtained by the reaction of neo-pentyl bromide under E_1 reaction conditions :

- Options
1. 2-methyl-2-butene
 2. neo pentyl alcohol
 3. 2-methyl butene
 4. 2-methyl-1,3-butadiene

pharmagang.com

Q.16 Choose the correct sequence of process during Atomization in atomic absorption spectroscopy :

- Options
1. Nebulization → Desolvation → Volatilization → Dissociation → Ionization
 2. Nebulization → Volatilization → Desolvation → Dissociation → Ionization
 - 3.

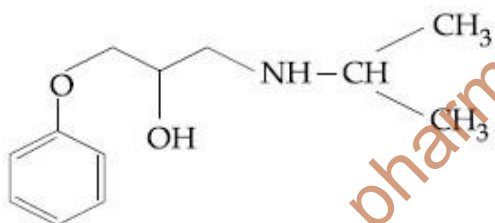
Desolvation → Nebulization → Volatilization → Dissociation → Ionization

4.
Desolvation → Nebulization → Dissociation → Volatilization → Ionization

Q.17 RNA molecules having intrinsic catalytic activity are called as _____.

- Options
1. Ribozymes
 2. mRNAs
 3. rRNAs
 4. sn RNAs

Q.18 Identify the name of drug with the following structure :



- Options
1. Esmolol
 2. Bisoprolol
 3. Metoprolol
 4. Betaxolol

Q.19 What will be the Heat of vaporisation of 1 mole of water, when it has the entropy change (ΔS) of 35.2 cal/mole.deg (at 25°C) ?

- Options
1. 10489 cal/mole
 2. 8465 cal/mole
 3. 880 cal/mole
 4. 1.408 cal/mole

Q.20 The infra-red absorption peaks of Nujol is due to vibrations involving :

- Options
1. $C-H_{str}$ and $C-H_{def}$
 2. $N-H_{str}$ and $N-H_{def}$
 3. $O-H_{str}$ and $O-H_{def}$
 4. $S-H_{str}$ and $S-H_{def}$

Q.21 One of the following is a most commonly used protecting group for amines :

- Options
1. Para Methyl benzyl (PMB)
 2. Tetra hydro pyranyl oxy (THP)
 3. t-Butyloxy carbonyl (t-BOC)
 4. Methoxy methylene (MOM)

Q.22 Blockade in β -oxidation results in :

- Options
1. Von Gierk's disease
 2. Scurvy
 3. Sudden infant death syndrome
 4. Taruli's disease

Q.23 Reaction of an α -halo ester with an aldehyde or ketone in the presence of a base like NaNH_2 gives α , β -epoxy carboxylic ester. This reaction is referred as :

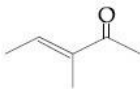
- Options
1. Willgerodt rearrangement
 2. Darzen's glycidic synthesis
 3. Bayer villiger rearrangement
 4. Bamford steven reaction

Q.24 Retention hyperbilirubenemia is caused due to _____.

- Options
1. Over production of bilirubin
 2. Reflux of bilirubin into blood stream
 3. Choleric jaundice
 4. Non clearance of bilirubin

Q.25

Predict λ_{max} for a $\pi \rightarrow \pi^*$ absorption band in the UV spectrum of following compound :



- Options
1. 240 nm
 2. 241 nm
 3. 237 nm
 4. 215 nm

Q.26 The following ACE inhibitor used in treating cardiovascular disorder is synthesized from the natural amino acids L-alanine and L-proline :

- Options
1. Enalapril
 2. Ramipril
 3. Lisinopril
 4. Captopril

Q.27 Which of the following pair of drugs is considered as selective α_1 -Blockers ?

- Options
1. Timolol and Metoprolol
 2. Formoterol and Levalbuterol
 3. Prazosin and Terazosin
 4. Yohimbine and Carynanthine

Q.28 Permitted tolerance limit for a 100 mL class B volumetric flask and 1000 mL class B volumetric flask according to BS 1792 specifications respectively are _____ mL.

- Options
1. 1.00 and 10.00
 2. 0.80 and 0.30
 3. 0.15 and 1.5
 4. 0.15 and 0.80

Q.29 Which among the following carrier gases has the highest thermal conductivity ?

- Options
1. Oxygen
 2. Helium
 3. Nitrogen
 4. Compressed Air

Q.30 Identify the molecule which will not exhibit Dipole moment ?

- Options
1. Ammonia
 2. Carbon dioxide
 3. Carbon monoxide
 4. Chloroform

Q.31

Kinetically $\frac{x}{a(a-x)} = kt$ is the expression for :

- Options
1. fractional order reaction
 2. pseudo first order reaction
 3. second order reaction
 4. first order reaction

Q.32 Select the correct order of ortho/para directing ability of the functional groups from those given below :

(Strongest first, Weakest last)

- Options
1. $-\text{NHCOR} > -\text{NR}_2 > -\text{C}_6\text{H}_5 > \text{I}$
 2. $-\text{NHCOR} > -\text{OH} > -\text{C}_6\text{H}_5 > \text{I}$
 3. $-\text{NHR} > -\text{NHCOR} > -\text{C}_6\text{H}_5 > \text{I}$
 4. $-\text{NHCOR} > -\text{NH}_2 > -\text{C}_6\text{H}_5 > \text{I}$

Q.33 When 50 ml of sodium hydroxide (0.1 M) is added to 100 mL of 0.1 M acetic acid, pH of the resultant solution is _____.

K_a of acetic acid = 1.82×10^{-5}

- Options
1. 8.58
 2. 7.42
 3. 7.06
 4. 4.74

Q.34 pM indicators are used in :

- Options
1. Non-Aqueous titrations
 2. Complexometric titrations
 3. Redox titrations
 4. Acid-base titrations

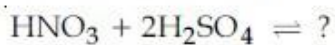
Q.35 Gabriel ring closure method is employed for the synthesis of :

- Options
1. Aziridine
 2. 1, 4-oxazine
 3. Oxaziridine
 4. Oxirane

Q.36 Which of the following inactive clotting factor is activated by the vitamin-K as a co-enzyme ?

- Options
1. II, V, VI, VIII
 2. I, II, III, IV
 3. II, VII, IX, X
 4. II, V, IX, X

Q.37 Choose the correct product of the following reaction :



Options

1. $\text{OH}^- + 2\text{HSO}_4^- + \text{NO}_2^-$
2. $\text{H}_3\text{O}^+ + 2\text{HSO}_4^+ + \text{NO}_2^+$
3. $\text{H}_2\text{O} + 2\text{HSO}_4^- + \text{NO}_2^+$
4. $\text{H}_3\text{O}^+ + 2\text{HSO}_4^- + \text{NO}_2^+$

Q.38 Phase solubility Analysis curve is not a good tool for :

Options

1. Complex formation
2. Bioavailability determination
3. Impurity detection
4. Polymorph detection

pharmagang.com

Section : Pharmaceutics

Q.1 The rheological and functional properties of synovial fluid are impaired due to :

Options

1. Decrease in the content of hyaluronic acid
2. Increase in the content of mucus
3. Increase in the content of hyaluronic acid
4. Decrease in the content of mucus

Q.2 MEDLINE, EMBASE, EBM AND IDIs are :

- Options
1. New compendial specification of drugs
 2. Source for drug patents
 3. Chronicles of drug standards
 4. Drug databases

Q.3 Microcrystalline cellulose is also called as :

- Options
1. Emdex
 2. Nutab
 3. Sugar tab
 4. Avicel

pharmagang.com

Q.4 Theories of emulsification are characterized by one of the following EXCEPT :

- Options
1. Film formation
 2. Solid particle adsorption
 3. Phase inversion
 4. Monomolecular adsorption

Q.5 "Shake well" label must be placed on the containers of :

- Options
1. Occuserts
 2. Ophthalmic suspension
 3. Ophthalmic solution
 4. Ophthalmic gels

Q.6 Which one of the following is the property of micro-emulsion ?

- Options
1. They exhibit a viscoelastic gel phase, when internal phase is added in excess.
 2. They have poor stability.
 3. They have milky yellow colour
 4. They have particle size more than 1 micron.

Q.7 The protein toxins that have been modified to reduce the toxicity without significantly altering the immunogenicity are known as :

- Options
1. Antisera
 2. Sera
 3. Toxoids
 4. Vaccines

Q.8 In tablet, hydroxy propyl methyl cellulose is used as :

- Options
1. Diluent
 2. Disintegrant
 3. Binder
 4. Film former

Q.9 Which one of the following viscometers can be used for characterizing non-Newtonian system ?

- Options
1. Falling sphere viscometer
 2. Capillary viscometer
 3. Hoesppler viscometer
 4. Cup and Bob viscometer

pharmagang.com

Q.10 Soda ash is also known as :

- Options
1. Calcium carbonate
 2. Sodium carbonate
 3. Lime stone
 4. Pure silica

Q.11 Movement of a charged particle through a liquid under the influence of an applied potential difference is known as :

Options 1. Electrophoresis

2. Sedimentation Potential

3. Streaming Potential

4. Electroosmosis

Q.12 Which mechanism of metabolism of drug is not affected by weight change of patient ?

Options 1. Oxidative metabolism

2. Acetylation metabolism

3. Hydrolytic metabolism

4. Conjugative metabolism

Q.13 The co-administration of erythromycin with cyclosporine :

Options 1. Increase bioavailability, due to inhibition of microflora in intestine

2. Increase bioavailability, due to inhibition of hepatic metabolism

3. Decrease bioavailability due to complex formation

4. Decrease bioavailability, due to induction of hepatic metabolism

Q.14 As per US FDA, NDA's for new chemical entitles are classified as either :

- Options
1. 'P' for product review or 'S' for standard review
 2. 'P' for priority review or 'S' for safety review.
 3. 'P' for priority review or 'S' for standard review
 4. 'P' for product review or 'S' for safety review

Q.15 Essentially Hospital Formulary system provide mechanism to :

- Options
1. Improve quality and hygenicity of food
 2. Streamline prescription writing
 3. Avoid brand and therapeutic duplication
 4. Improve surgical procedures

Q.16 In case of one-compartment open model intravenous infusion, C_{ss} (steady state plasma concentration) is equal to :

- Options
1. $\frac{[C_{max}][\text{Infusion rate}]}{\text{Clearance}}$
 2. $\frac{[t_{max}][\text{Infusion rate}]}{\text{Clearance}}$
 3. $\frac{[\text{Plasma concentration}][\text{Infusion rate}]}{\text{Clearance}}$
 4. $\frac{\text{Infusion rate}}{\text{Clearance}}$

Q.17 Dakin's solution is a synonym for :

- Options**
1. Chlorinated soda solution
 2. Ammonium Acetate solution
 3. Chloroxylenol solution
 4. Aluminium Acetate solution

Q.18 21 CFR part 211 of USFDA describes :

- Options**
1. Current good manufacturing practice
 2. Current good laboratory practice
 3. Current good clinical practice
 4. Current good packaging practice

pharmagang.com

Q.19 The phase contrast microscopy is valuable in studying living cells which are :

- Options**
1. Stained
 2. Treated with fluorescent antibody
 3. Unstained
 4. Treated with fluorescent dye

Q.20 Leaching by immersion of crude material in a solvent is also known as :

- Options
1. Precipitation
 2. Maceration
 3. Crystallization
 4. Evaporation

Q.21 Volume of blood that flows per unit time per unit volume of the tissue is :

- Options
1. Residence time
 2. Elimination rate
 3. Gastric emptying rate
 4. Perfusion rate

Q.22 Which polymorphic form of a drug candidate has highest melting point :

- Options
1. Unstable
 2. Hydrates
 3. Metastable
 4. Stable

Q.23 In preformulation study polymorphs can be detected by :

- Options
1. Counter - current chromatography
 2. Retractometry
 3. High performance liquid chromatography
 4. Differential scanning calorimetry

Q.24 Which of the following statement is NOT true regarding bulkiness ?

- Options
1. Bulkiest substance will require container larger than required for less bulky substance
 2. The reciprocal of bulk density is bulkiness
 3. Smaller particles shift between larger ones and increases bulkiness
 4. Bulkiness increases with decrease in particle size

pharmagang.com

Q.25 In treating immunodeficiency disease the goal is to maintain IgG levels at about :

- Options
1. 100 mg/ dL
 2. 400 mg/ dL
 3. 300 mg/ dL
 4. 200 mg/ dL

be mixed in a proportion to get a mixture with required HLB 12. What is the weight of individual emulsifier that is to be taken to have a total weight of 7 gm ?

- Options
1. A = 5.6 gm and B = 1.4 gm
 2. A = 1.4 gm and B = 5.6 gm
 3. A = 1.2 gm and B = 5.8 gm
 4. A = 5.8 gm and B = 1.2 gm

Q.27 In case of suppositories base, SFI stands for :

- Options
1. Solid Fat Index
 2. Solidified Fatty acid Incline
 3. Solid Fluid Indices
 4. Solidified Fatty acid Indices

Q.28 Containers may be rendered free from pyrogens by adequate cleaning and by :

- Options
1. Autoclaving at 121°C for 1 hour
 2. Heating at 100°C for 3-4 hours
 3. Autoclaving at 121°C for 15 minutes.
 4. Heating at 210°C for 3-4 hours

Q.29 When two brands of a drug product gives same clinical results, it is termed as :

Options 1. Therapeutic equivalence

2. Pharmaceutical equivalence
3. Bio equivalence
4. Clinical equivalence

Q.30 The following technique/s is/are used to determine the amount of drug bound to a protein :

- Options
1. Distribution method
 2. Solubility
 3. pH titration
 4. Equilibrium dialysis

Q.31 GMP regulation are pertaining to minimum requirements to be met by industry when :

- Options
1. Manufacture of human drugs and veterinary drugs.
 2. Manufacture and holding of human drugs and veterinary drugs
 3. Manufacture and packaging of human drugs and veterinary drugs.
 4. Manufacturing, packaging and holding of human drugs and veterinary drugs.

Q.32 Roll-tube technique is the modification of :

Options 1. Micromanipulator technique

2. Pour plate technique
3. The streak - plate technique
4. Spread plate technique

Q.33 In case of Aerosol testing, valve delivering acceptance criteria for a volume of 54 μL or less is :

- Options
1. $\pm 5\%$
 2. $\pm 10\%$
 3. $\pm 15\%$
 4. $\pm 75\%$

Q.34 Which of the following oxide is not used for achieving Amber color to glass ?

- Options
1. Cobalt
 2. Iron
 3. Carbon
 4. Manganese

Q.35 If mean volume – number diameter of a powdered sample is 2.41 μm , density is 3 gm/cm^3 , the number of particles/gm will be :

Options

1. 3.68×10^{10}
2. 5.38×10^{10}
3. 4.55×10^{10}
4. 4.70×10^{10}

Q.36 For bitter drugs in paediatric formulations, excellent flavouring agent will be :

- Options
1. Lemon syrup
 2. Black current syrup
 3. Orange syrup
 4. Raspberry syrup

Q.37 For drug substances with highly variable pharmacokinetic characteristics the following Bioequivalence study design is used :

- Options
1. Non-Replicate Design
 2. Non-Parallel Design
 3. Replicate Design
 4. Parallel Design

Q.38 Which of the following is NOT a mechanism for achieving gastroretention ?

Options

1. Swelling
2. Floating
3. Osmosis
4. Mucoadhesion

Section : Pharmacognosy

Q.1 In Gambir - fluorescin test the petroleum spirit layer shows a strong : _____

- Options
1. green fluorescence
 2. red fluorescence
 3. blue fluorescence
 4. yellow fluorescence

Q.2 Antiviral action of Neem is due to :

- Options
1. Azadirachtin
 2. Nimbin
 3. Kaemferol
 4. Nelanin

Q.3 All members of this order are trees or shrubs; mostly evergreen with needle - like leaves ; monoecious or dioecious - sporophylls usually in cones. Resin ducts occur in all parts :

1. Coniferae
2. Taxales
3. Ginkgoales
4. Cycadales

Q.4 The Glycoside Scilliroside in red squill acts as :

Options 1. Rodenticide

2. Acaricide
3. Insecticide
4. Molluscide

Q.5 Pungency of Zingiber officinale rhizome is due to the presence of :

Options 1. Citral

2. Gingerol
3. Camphoric acid
4. Gingerol

Q.6 The principal cultivation areas of pyrethrum flowers are in -

Options 1. Kenya

2. Malaysia

3. Sri Lanka

4. India

Q.7 The size of Lycopodium spores is :

- Options
1. 25 μm
 2. 15 μm
 3. 45 μm
 4. 35 μm

Q.8 Shellac is a resinous substance prepared from a secretion that encrusts the bodies of a scale insect :

- Options
1. *Acipenser huso*
 2. *Viverra civet*
 3. *Alverites moschiferus*
 4. *Karria lacca*

Q.9 Regholarrenines A-F have been isolated from :

- Options
1. Areca
 2. Veratrums
 3. Aconite
 4. Kurchi

Q.10 In *Cassia angustifolia* short-term drought :

- Options
1. decreases the concentration of sennosides A + B
 2. causes loss of leaf biomass
 3. causes death of the plant
 4. increases the concentration of sennosides A + B

Section : Pharmacology

Q.1 Identify the drug which is not useful in the treatment of tuberculosis :

- Options
1. Streptomycin
 2. Ciprofloxacin
 3. Pyrazinamide
 4. Gentamicin

Q.2 Which of the following is true ?

Excessive use of diuretics can lead to :

- Options
1. Cardiogenic shock
 2. Hypovolemic shock
 3. Neurogenic shock
 4. Hypervolemic shock

Q.3 Production of an abnormal IgG immunoglobulin in Grave's disease causes :

- Options
1. Rheumatoid arthritis
 2. Hypothyroidism
 3. Multinodular goitre
 4. Thyrotoxicosis

Q.4 Several different chemicals released by microbes and inflamed tissues attract phagocytes, this phenomenon is called as _____.

- Options
1. Integrins
 2. Phagocytosis
 3. Emigration
 4. Chemotaxis

pharmagang.com

Q.5 Hematocrit 65% to 70% indicates :

- Options
1. Hypoxia
 2. Polycythemia
 3. Hemophilia
 4. Anaemia

Toppers Pharma Tech

Q.6 Match the following liver abnormalities with consequences :

- | | |
|-----------------|---|
| (a) Steatosis | (M) Raised bilirubin level |
| (b) Cholestasis | (N) Slight rise in serum transaminase level |
| (c) Hepatitis | (O) Accumulation of fat droplets within liver cells |
| (d) Fibrosis | (P) Elevated liver function test (LFT's) |

Options

1. (a) - (N)
(b) - (P)
(c) - (M)
(d) - (O)
2. (a) - (O)
(b) - (M)
(c) - (P)
(d) - (N)
3. (a) - (N)
(b) - (O)
(c) - (P)
(d) - (M)
4. (a) - (P)
(b) - (O)
(c) - (N)
(d) - (M)

Q.7 Which of the following is NOT a cardioselective β blocker ?

Options

1. Nebivolol
2. Acebutolol
3. Bisoprolol
4. Pindolol

Q.8 Cardiac output is :

- Options
1. Volume of blood ejected by the auricles per beat
 2. Volume of the blood ejected by the left ventricle per minute
 3. Volume of the blood ejected by the left ventricle per beat
 4. Volume of blood ejected by the auricle per minute

Q.9 Characteristic microscopic features observed in Alzheimer's disease is :

- Options
1. Epidural haemoregic patches
 2. Presence of neuritic plaques containing A β -amyloid
 3. Depigmentation of substantia nigra
 4. Demyelination of neurons in spinal cord

Q.10 Following are the facts regarding clinical applications of muscarinic receptor blocking drugs. Identify the false statement :

- Options
1. Scopolamine is one among the old remedies used to treat sea-sickness
 2. Marked reflex vagal discharge may stimulate sinoatrial or atrioventricular node to improve cardiac output.
 3. Used in the treatment of parkinson's disease is often an exercise in polypharmacy, since no single agent is fully effective.
 4. Mydriasis produced greatly facilitates ophthalmoscopic examination of the retina and measurement of refractive error in uncooperative patient.

Q.11 Which of the following cells are called scavenger cells ?

- Options
1. Macrophages
 2. Neutrophils
 3. Natural killer cells
 4. Mast cells

Q.12 Which of the following is 5-alpha reductase inhibitor ?

- Options
1. Gliclazide
 2. Polythiazide
 3. Finasteride
 4. Sildenafil

Q.13 Which of the following anticonvulsants have both inhibition of excitatory glutamatergic synapse and facilitation of GABA mediated Cl^- channel opening action ?

- Options
1. Valproate
 2. Topiramate
 3. Phenytoin
 4. Ethosuximide

Q.14

Which one of the following is NOT the role of Nitric oxide ?

- Options
1. Mediating microbicidal action of macrophages
 2. Relaxing vascular smooth muscle
 3. Serving as neurotransmitter in CNS
 4. Inducing platelet aggregation

Q.15 Identify the false statement about benzodiazepines from the following :

- Options
1. Benzodiazepines produce muscle relaxation and loss of motor co-ordination
 2. Benzodiazepines cause reduction of anxiety
 3. Benzodiazepines are useful in insomnia
 4. Benzodiazepines cause convulsions

Q.16 The term 'aneurysm' refers to :

- Options
1. Abnormal growth of neurones near blood vessels
 2. Abnormal connections in blood vessels
 3. Permanent blockage of blood vessels
 4. Permanent abnormal dilatation of blood vessel

Q.17 Glucocorticoids have following effects - EXCEPT :

1. Lipolysis
2. Protein breakdown and glucose formation
3. Resistance to stress
4. Stimulation of immune responses

Q.18 What is anaplasia ?

- Options
1. Lack of growth of cells
 2. Increase in size of cell
 3. Morphological and functional resemblance to normal cells
 4. Morphological and functional alterations/changes, that are different from normal cells

Q.19 Testing of chemicals by OECD guideline No. 420 refers to which of the following :

- Options
1. Acute oral toxicity by fixed dose procedure
 2. Repeated dose 28-day toxicity study in rodents
 3. Acute oral toxicity by acute toxic class method
 4. Acute oral toxicity by up and Down procedure

Q.20 What are sutures ?

- Options
1. Synovial joints
 2. Cartilaginous joints

3. Non fibrous joints

4. Fibrous joints of the skull

Q.21 Select the ulcer protective drug from the following :

- Options
1. Oxyphenonium
 2. Metronidazole
 3. Misoprostol
 4. Sucralfate

Q.22 Which is NOT true about calcitriol ?

- Options
1. It prevents tubular reabsorption of calcium and phosphate
 2. It enhances reabsorption of calcium and phosphate from bone
 3. Enhances absorption of calcium and phosphate from intestine
 4. It is active form of Vit D₃

Q.23 The adverse reaction associated with β -2 agonists administered by inhalation or nebulisation in the management of asthma does not include _____.

- Options
1. Peripheral vasodilation
 2. Fine tremor
 3. Tachycardia

Q.24 Numerous isomers of human liver P450 enzymes have been identified. It is not worthy that _____ alone is responsible for the metabolism of over 50% of the prescription drugs metabolized by liver.

- Options**
1. CYP2B6
 2. CYP1A11
 3. CYP1A2
 4. CYP3A4

Q.25 The antiemetic activity of glycopyrronium is related to potent inhibition of _____ receptor both peripherally and centrally.

- Options**
1. H₁
 2. D₂
 3. 5HT₃
 4. M₁

pharmagang.com

Q.26 Which of the following directly inhibits Factor Xa ?

- Options**
1. Rivaroxaban
 2. Dabigatran
 3. Bivalirudin
 4. Warfarin

Q.27 Disturbances of oestrogen/progesterone balance could cause a relative deficiency of _____ leading to disturbances in production of dopamine and serotonin. This contributes for emotional disturbances and depression.

- Options
1. Tyrosine
 2. Pyridoxine phosphate
 3. Enzyme decarboxylase
 4. Co-factor A

Click To Visit Best pharma
portal
pharmagang.com

Q.28 Metabolic acidosis does NOT occur during :

- Options
1. Uncontrolled diabetes mellitus
 2. Starvation
 3. Chronic renal failure
 4. Wound healing

pharmagang.com